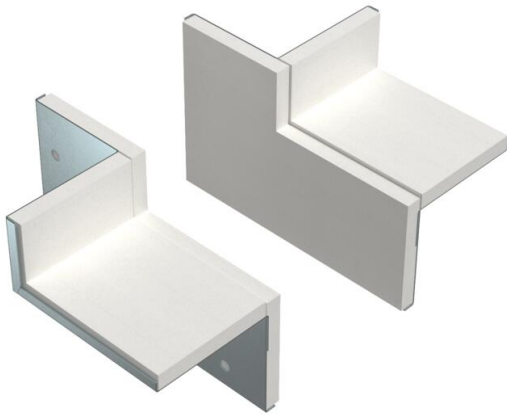


# Technical data sheet

Wall connection set, 2-sided, for corner mounting, duct height 40 mm, FS  
Item number: 7218134



Wall connection collar, 2-sided, with integrated seal for PYROLINE® Rapid PLM installation duct. For mounting in the area of wall and ceiling connections as well as wall penetrations in room corners. Set consisting of 2 opposing components, suitable for ceiling or wall mounting of the installation duct.



- St** Steel
- FS** Strip galvanized

## Master data

Item number	7218134
Type	PLM CC 0410 FS
Description 1	Wall connection collar set
Description 2	for corner mounting
Manufacturer	OBO
Dimension	85x175x117
Colour	zinc
Material	Steel
Surface	Strip galvanized
Surface standard	DIN EN 10346
Smallest sales unit	1
Unit of quantity	Piece
Weight	41.92 kg
Weight unit	kg/100 pc.
CO2 Footprint (GWP) Cradle-to-Gate	2,74 kg CO2e / 1 Piece

# Technical data sheet

Wall connection set, 2-sided, for corner mounting, duct height 40 mm, FS

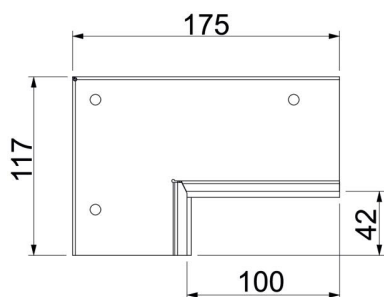
Item number: 7218134



## Dimensions



Dimension B	175 mm
Dimension b	100 mm
Dimension d	42 mm
Dimension H	117 mm



## Technical data

Type of accessory	Wall connection collar
Accessories	yes
Spare part	no