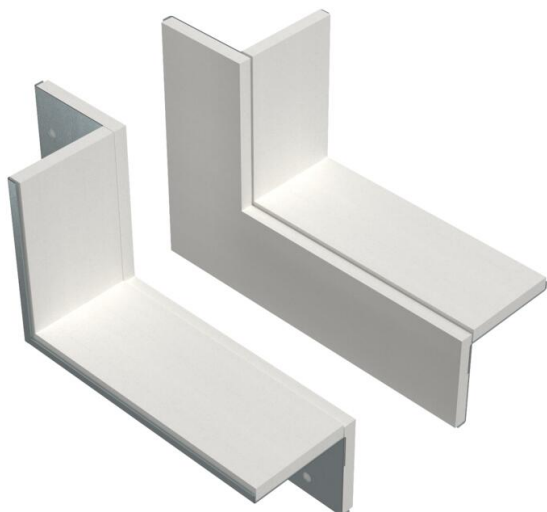


# Technical data sheet

Wall connection set, double-sided, for corner mounting,  
duct height 120 mm, FS  
Item number: 7218142



Wall connection collar, 2-sided, with integrated seal for PYROLINE® Rapid PLM installation duct. For mounting in the area of wall and ceiling connections as well as wall penetrations in room corners. Set consisting of 2 opposing components, suitable for ceiling or wall mounting of the installation duct.



- St** Steel
- FS** Strip galvanized

## Master data

Item number	7218142
Type	PLM CC 1220 FS
Description 1	Wall connection collar set
Description 2	for corner mounting
Manufacturer	OBO
Dimension	85x275x197
Colour	zinc
Material	Steel
Surface	Strip galvanized
Surface standard	DIN EN 10346
Smallest sales unit	1
Unit of quantity	Piece
Weight	77.16 kg
Weight unit	kg/100 pc.
CO2 Footprint (GWP) Cradle-to-Gate	4,524 kg CO2e / 1 Piece

# Technical data sheet

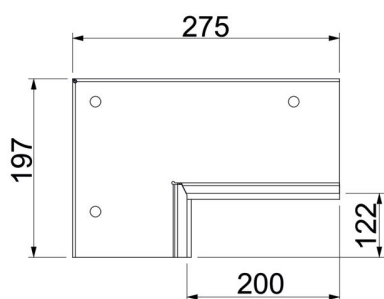
Wall connection set, double-sided, for corner mounting,  
duct height 120 mm, FS  
Item number: 7218142



## Dimensions



Dimension B	275 mm
Dimension b	200 mm
Dimension d	122 mm
Dimension H	197 mm



## Technical data

Type of accessory	Wall connection collar
Accessories	yes
Spare part	no