

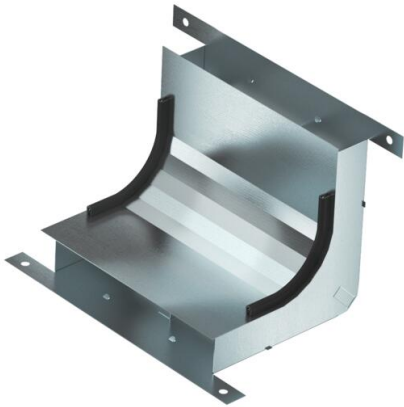
Technical data sheet

Vertical bend, two-compartment, height 38 mm

Item number: 7400623



Vertical bend, two-compartment, for vertical direction changes of screed-covered underfloor ducts (wall connections, supplies).



St Steel

FS Strip galvanized

Master data

Item number	7400623
Type	KV2 19038-2
Description 1	Vertical bend
Description 2	2 compartments for EÜK-2
Manufacturer	OBO
Dimension	270x177,7x177,7
Material	Steel
Surface	Strip galvanized
Surface standard	DIN EN 10346
Smallest sales unit	1
Unit of quantity	Piece
Weight	82.41 kg
Weight unit	kg/100 pc.
CO2 Footprint (GWP) Cradle-to-Gate	2,9539 kg CO2e / 1 Piece

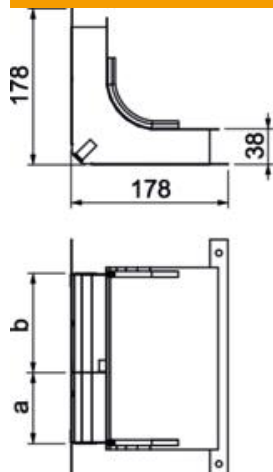
Technical data sheet

Vertical bend, two-compartment, height 38 mm

Item number: 7400623



Dimensions



Length	178 mm
Width	190 mm
Height	38 mm
Dimension a	80 mm
Dimension b	110 mm
Dimension h	38 mm

Technical data

Number of fixed partitions	1
Number of compartments	2 St.
Suitable for screed-flush closed underfloor ducts	no
Suitable for screed-covered underfloor ducts	yes
Trunking width, min.	190 mm
Duct height, min.	38 mm
Cross-section, draw a	2639 mm ²
Cross-section, draw b	3730 mm ²